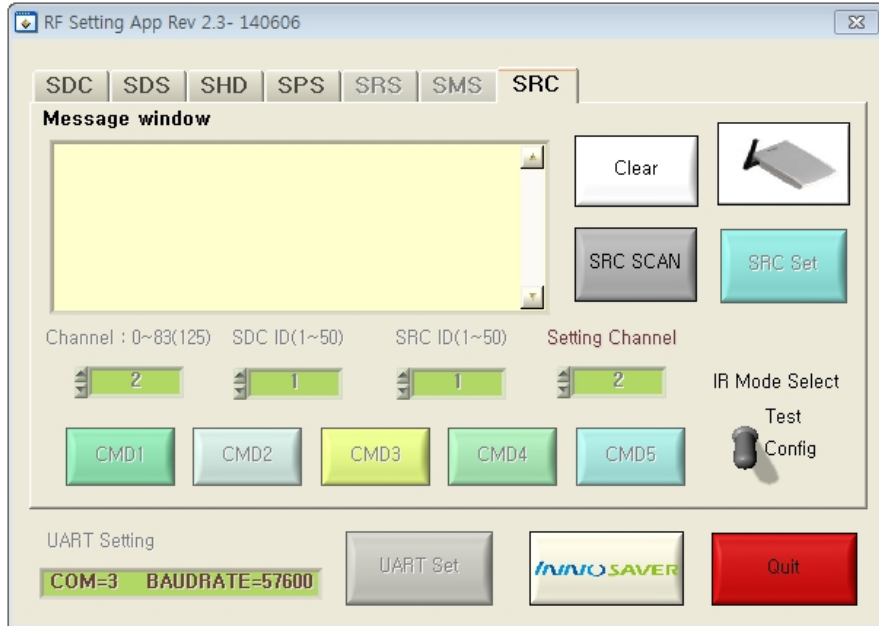
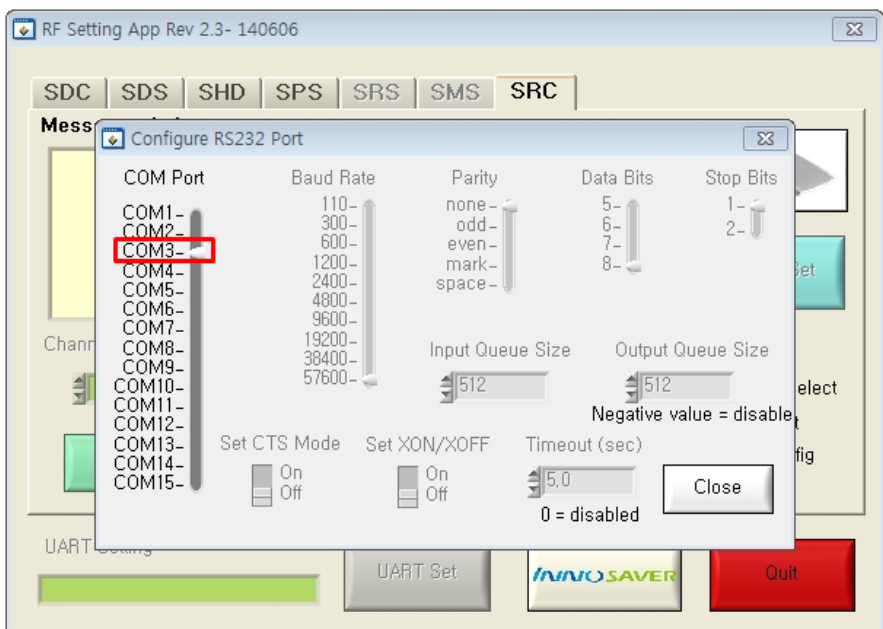


1. 셋팅 방법

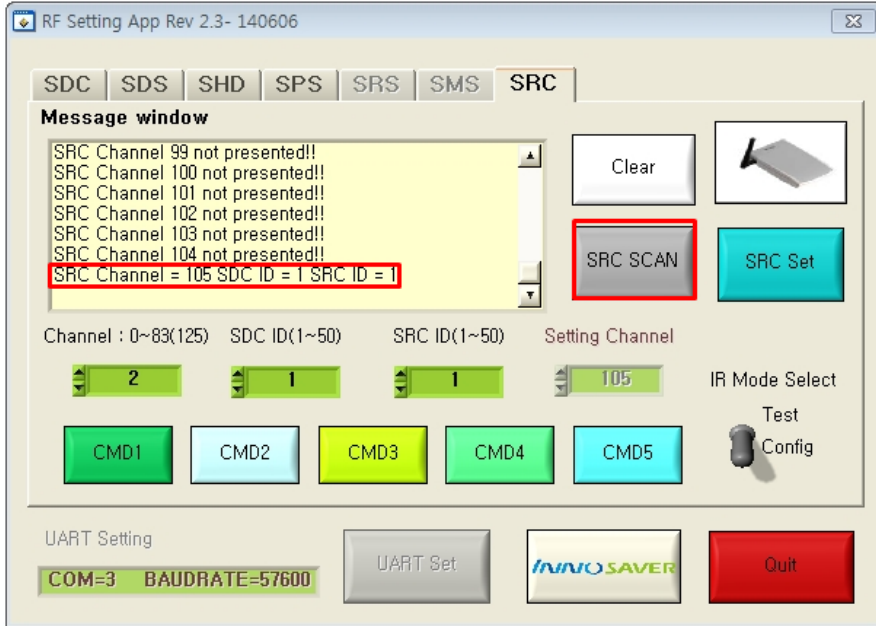
- 1) USB 동글 셋팅 방법
 - SPS 설정방법 1,2번 항목 참조
- 2) 커누스에서 제공한 RF Setting App을 실행 합니다.



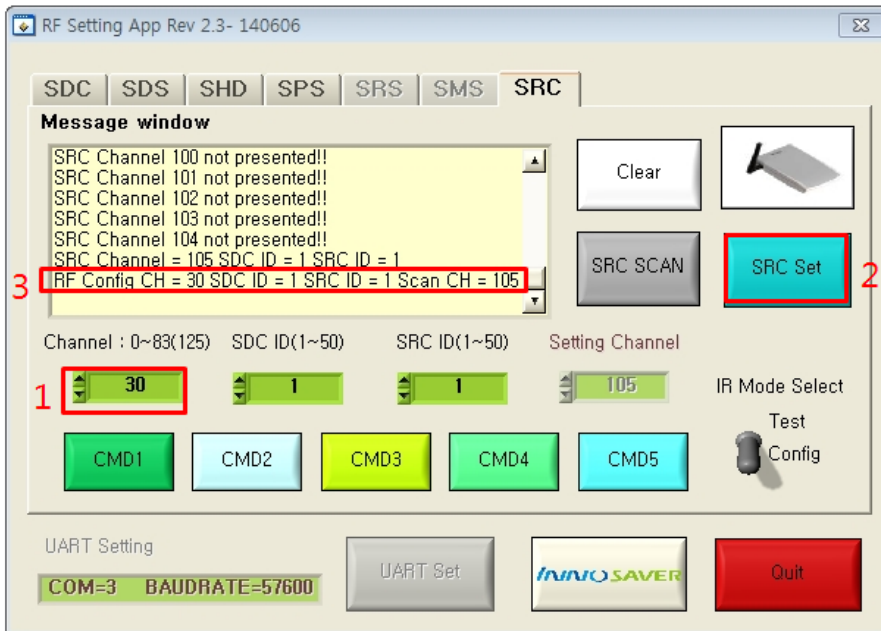
- 3) UART Set 버튼을 눌러 장치 관리자에서 확인한 COM PORT를 설정 합니다..



- 4) SRC 스캔 버튼을 눌러 셋팅 하려는 SRC를 자동 검색 합니다.
 (SRC는 1대씩 전원을 인가 하여 셋팅 하여야 합니다.)



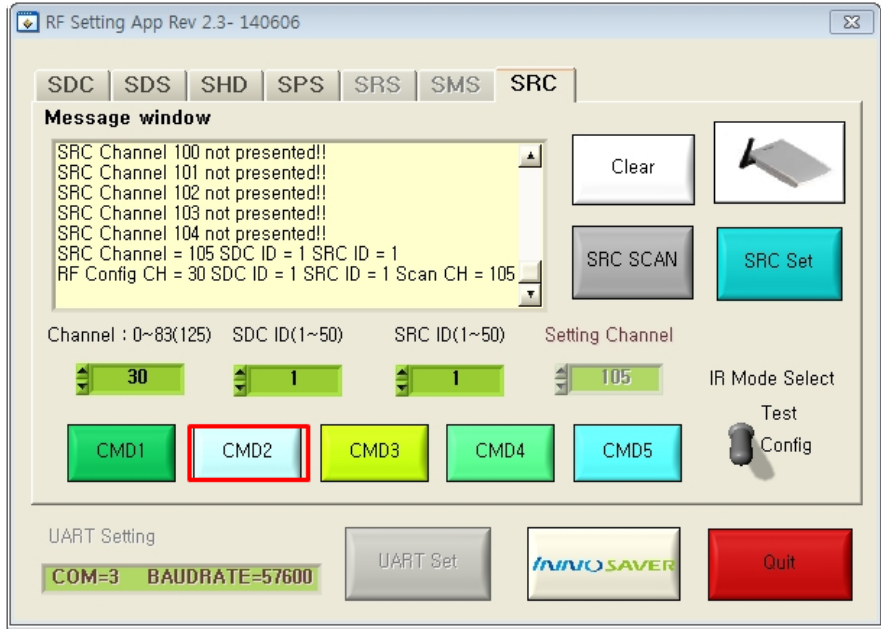
- 5) SRC 채널을 확인 후 변경하고자 하는 채널로 설정 합니다.



- 6) SRC 설정 완료 후 SRC 아답터를 제거 후 다시 연결 합니다.

7) SRC 리모컨 학습 방법




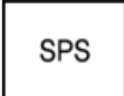


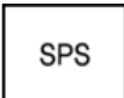





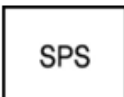

CMD2 버튼을 누른 후 만능리모컨과 SRC를 마주보게 한 뒤 만능리모컨의 OFF 신호를 학습시킵니다.



8) SDC의 SRC Activation을 활성화 시켜 SDC와 SRC가 연동하여 동작하는지 확인 합니다.



2. 설정 방법

	동시에 3초 이상	세팅 모드 실행	
	1회 touch	대메뉴 선택	
	확인	종메뉴 입장	
	3회 touch	종메뉴 선택	
	1회 touch	소메뉴 입장	
	원하는 동작 값 선택	SRC 사용 안함	
		SRC 수동 사용	
		SRC 수동 및 자동 사용	
		SRC 자동 사용	
	확인	설정 완료 후 대메뉴로 복귀	
	동시에 3초 이상	셋팅 모드 종료	